

---

The logo for K30 GLASS is centered on a dark green square background. It features the text "K30" in a large, bold, white sans-serif font. Below "K30", the word "GLASS" is written in a smaller, white, all-caps sans-serif font, with each letter spaced out. The "0" in "K30" is a stylized circle with a small gap at the top right.

K30  
GLASS

K30 - PDS (Protective Desk Screening)

---

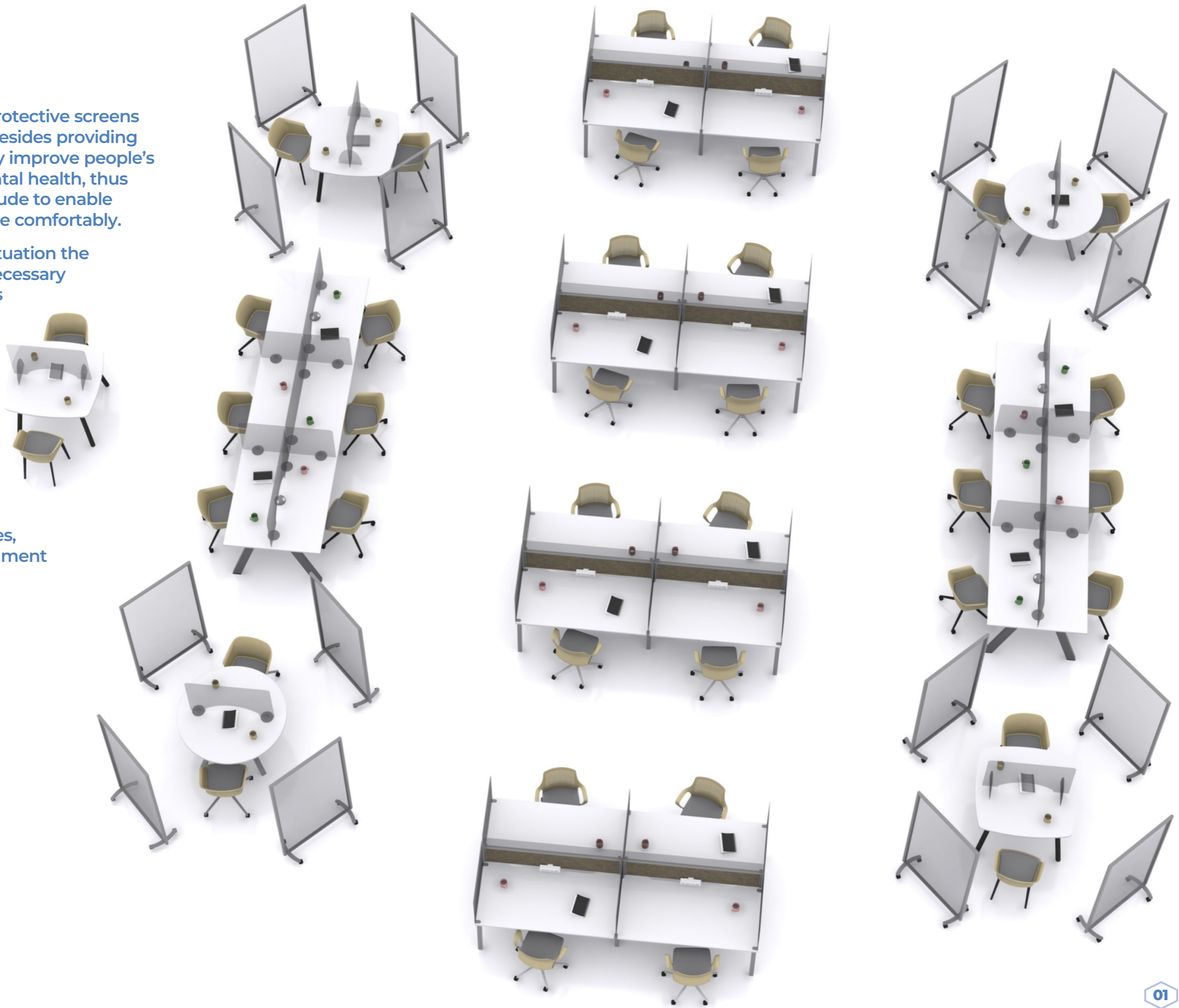


# K30-PDS

PDS is our solution for protective screens within the workplace. Besides providing the required safety, they improve people's feeling of trust and mental health, thus inspiring a positive attitude to enable employees to work more comfortably.

In light of the current situation the importance of taking necessary measures for both users and employees has become a must.

At this time, social distancing is one of the most effective measures to avoid spreading illnesses and infections amongst the population, and by way of different practices, we can obtain an environment that is respectful of the people sharing it.





## Self-supporting protective screen

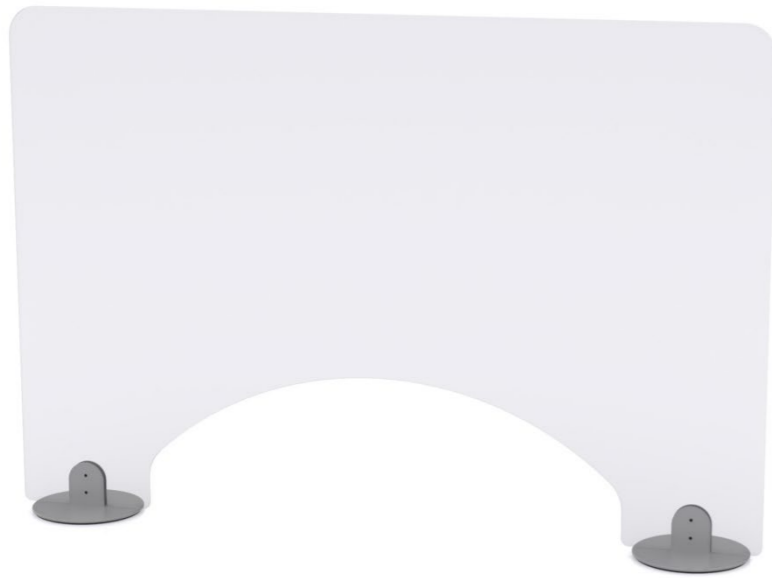
PDS self-supporting protective screens provide health and wellbeing solutions to all work spaces

A flexible, versatile, stable and easy to clean solution that ensures users are separated from one another whilst maintaining interaction and visual contact.

PDS Screen One is made completely from 5mm original Perspex cast clear acrylic.

Screens can be manufactured with or without lower aperture and in several different sizes. Screen One shown is 1000mm wide x 670mm high with supporting feet 300mm deep and containing the lower aperture.





## Self-supporting protective screen

PDS Screen Two retains all the flexible and hygiene attributes from Screen One.

Once again made completely from 5mm original Perspex cast clear acrylic but this time the supporting feet are a circular mild steel design with a powder coat finish in silver as standard.

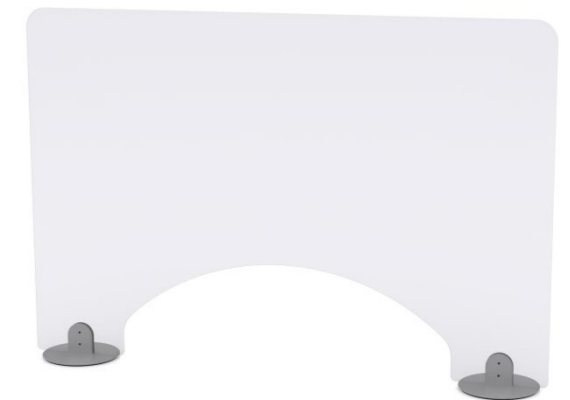
Screens can be manufactured with or without lower aperture and in several different sizes. Screen Two shown is 1000mm wide x 670mm high with supporting feet 160mm deep and containing the lower aperture.

# PDS Screen Three

## Self-supporting protective screens

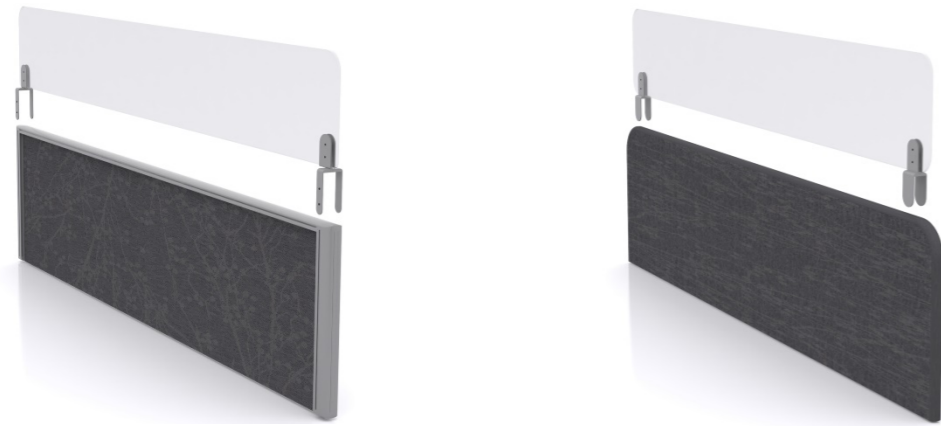
PDS Screen Three provides a health and wellbeing solution for collaborative work spaces whilst retaining all the flexible and hygiene attributes from Screen One.

With the same Screen Two specification, PDS Screen Three provides greater size options with widths from 600mm up to 2000mm, in 200mm increments. Or 25mm less in widths to avoid corner clashes. All heights are 600mm



The lower aperture provides an ideal cutout to access powder and data modules

# PDS Screen Four



PDS Screen Four provides a solution where current screens need to be retained.



## Plug-on protective screens

PDS Screen Four provides a health and wellbeing solution for work spaces with division screens in place whilst retaining all the flexible and hygiene attributes from Screen One.

PDS Screen Four are once again manufactured from 5mm original Perspex cast clear acrylic with metal attachment brackets. Screen finished height is shown at 600mm, but different heights and widths to work with your current screens can be produced. The plug-on brackets work with different existing screen thicknesses.

## Clamp-on protective screens

PDS Screen Five provides a health and wellbeing solution for work spaces where a fixed method is preferred. Providing a solution where no division screens or a mix of screens are currently in place whilst retaining all the hygiene attributes from Screen One.



The clamped version provides a fixed solution which is simple to attach to any worksurface in numerous positions with several bracket options.

PDS Screen Five are once again manufactured from 5mm original Perspex cast clear acrylic with metal attachment brackets finished in silver as standard. The clamp-on brackets are made to work with different screen top thicknesses.

Numerous size options with widths from 600mm up to 2000mm, in 200mm increments. Or 25mm less in widths to avoid corner clashes. All heights are 600mm



## Clamp-on protective screens





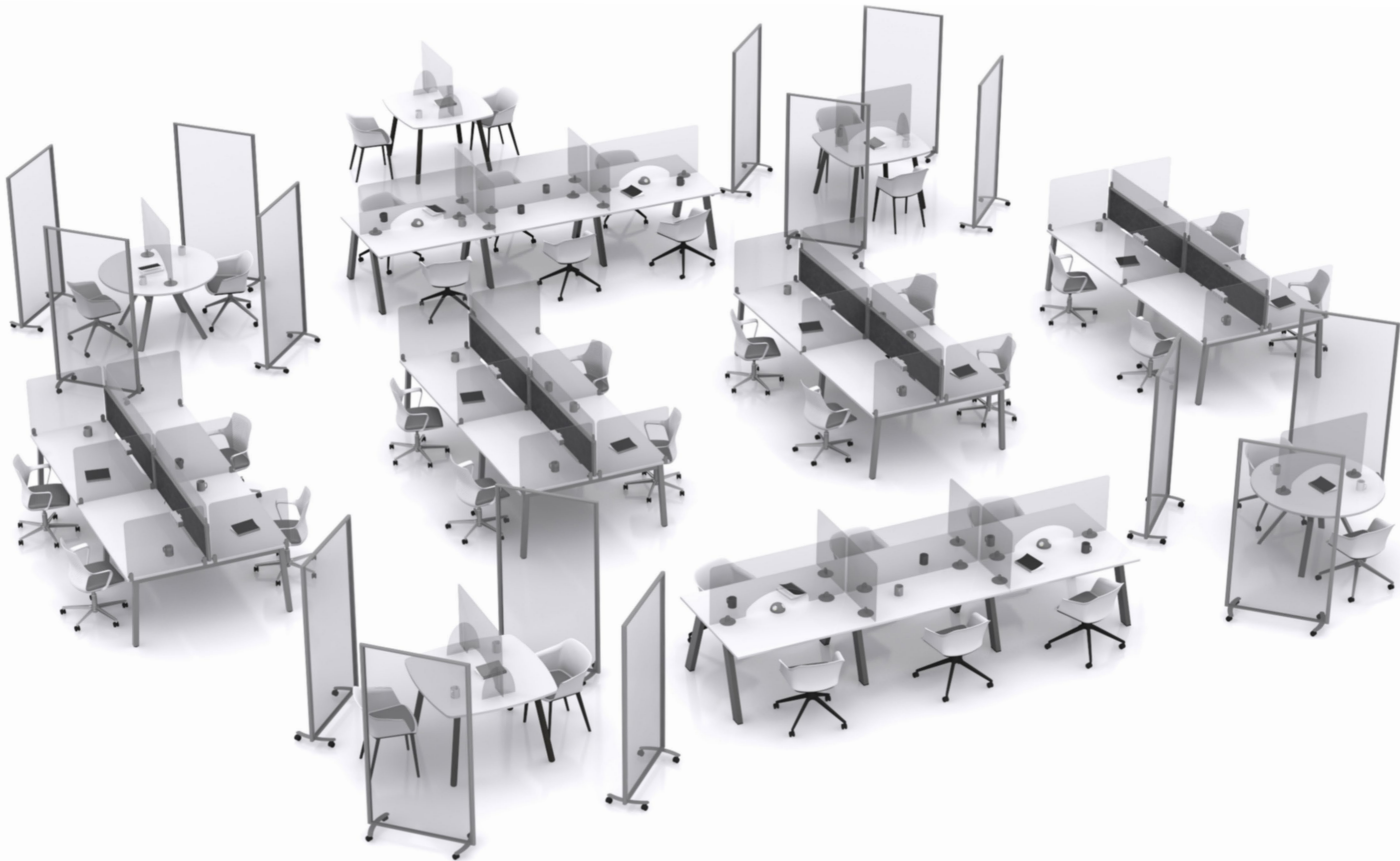
## Free-standing protective screen

PDS Screen Six retains all the flexible and hygiene attributes from Screen One.

The array of mobile or static screens from our well established Marathon range are a modern, stylish and cost effective space dividing solution with a choice of white, silver and graphite frames. The free-standing screens are constructed with a 40mm aluminium frame with straight and curved options.

Numerous widths and heights are available, shown here in 1000mm wide and 1800mm high.





## Contact Details

---



**K30 Glass**  
**Unit 18, More House Farm**  
**Wivelsfield**  
**East Sussex, RH17 7RE**

**0330 058 1680**

**[info@k30glass.co.uk](mailto:info@k30glass.co.uk)**

**[www.k30glass.co.uk](http://www.k30glass.co.uk)**

---